

FUTUREENERGY

# AirForce<sup>®</sup> 1

## 1kW MICRO WIND TURBINE & AIRFORCE CONTROL V5

24V & 48V battery charging versions

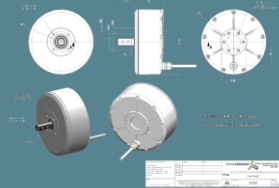
*automatic stop - remote control – performance monitoring*

*Permanent Magnet Generator designed and manufactured in Britain by FUTUREENERGY*

*“Breakthrough in simplicity”*

 Designed and manufactured by FUTUREENERGY in Britain

Permanent Magnet Generator optimised for wind applications



Highly dependable  
Minimal maintenance  
Long life in service  
Quality and performance

Automatic control and operation with AirForce<sup>®</sup> control protection



Remote monitoring & control via smart-phone app

*Installation examples: off-grid locations – battery charging – hybrid solutions – camping & glamping sites - agricultural buildings - boats and barges - telecoms power – remote locations - oil rigs – humanitarian aid – remote powered equipment – holiday homes - pumping solutions*

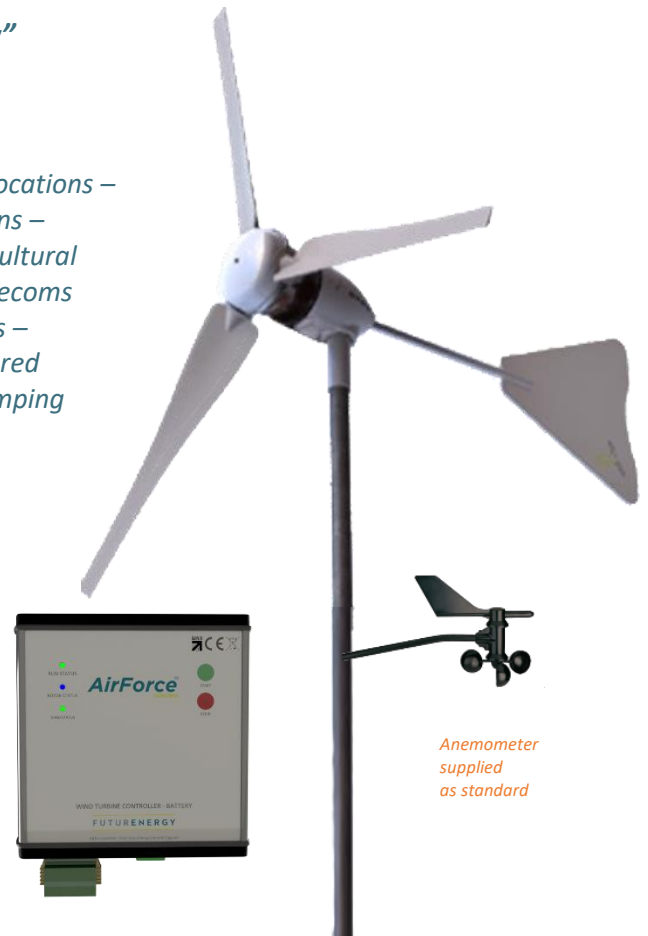
*24v or 48v Available*

### Key features:

- ▲ **Auto-stop** function
- ▲ Monitors wind speed
- ▲ Monitors Battery Voltage
- ▲ Protects Battery Life
- ▲ Smartphone app for remote data view and full configuration
- ▲ Tough glass-reinforced-nylon turbine blades
- ▲ All bearings sealed for life
- ▲ Stainless Steel 316 Chassis fixing for prolonged life
- ▲ Compatible with solar-wind hybrid installation
- ▲ Rugged, simple design, minimal maintenance

### Airforce 1 Wind Turbine System Comprises

- ▲ **1kW Wind Turbine** (incorporating FuturEnergy Permanent Magnet Generator)
- ▲ **Airforce Control**
- ▲ **Anemometer**

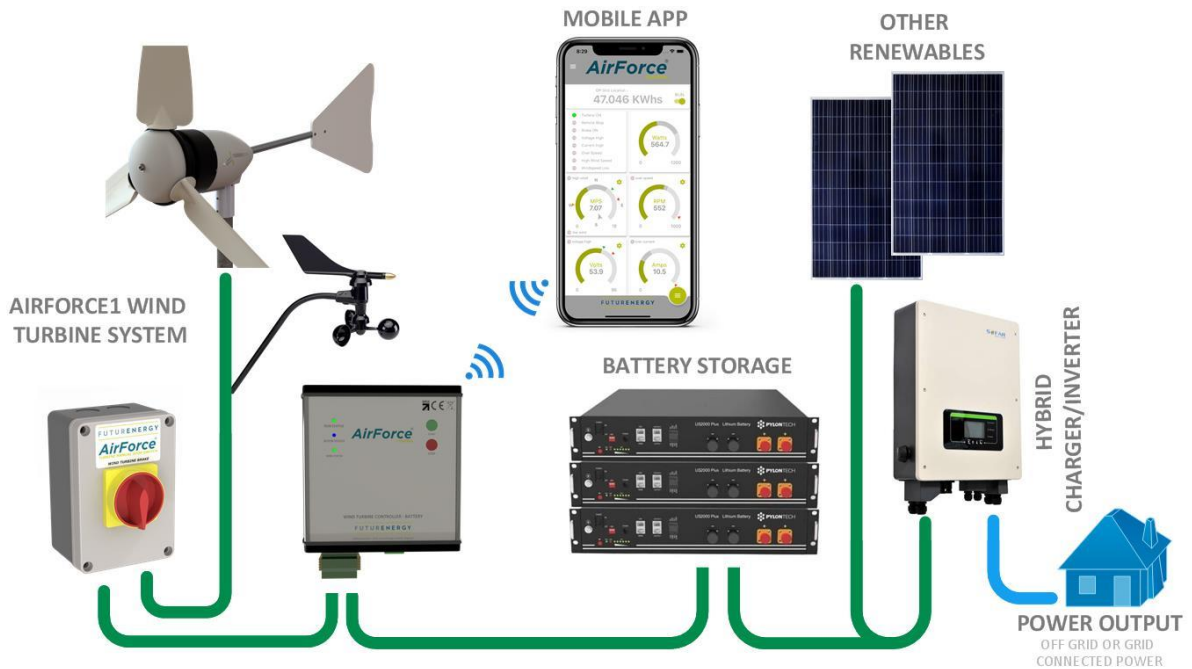


*Anemometer supplied as standard*



# FUTUREENERGY

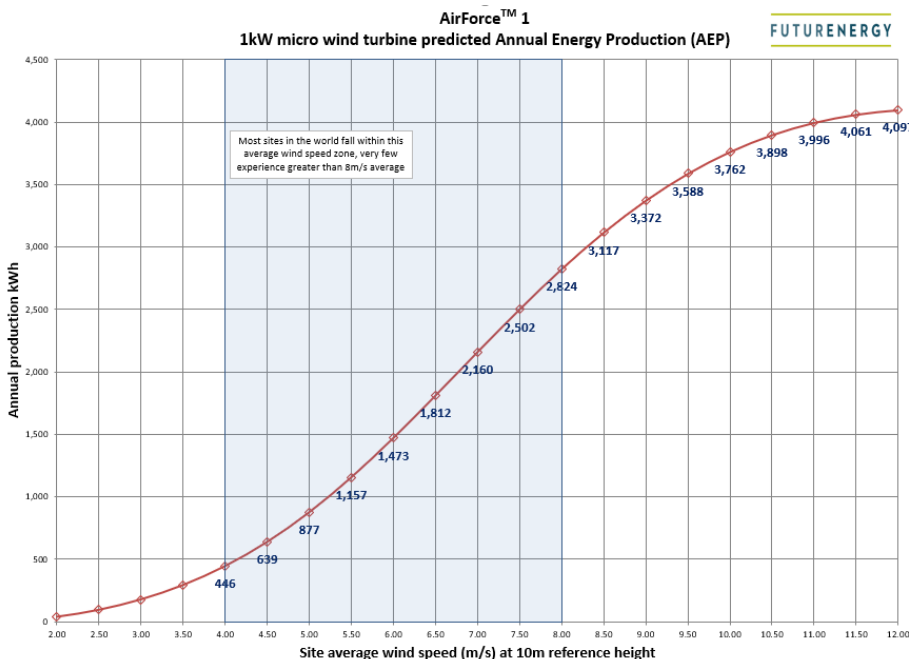
Installation schematic (typical):



## AirForce<sup>®</sup> 1 Technical Specification

**Nominal power output:** All versions 1000W  
**Start-up wind speed:** ~3.5 m/s  
**Rated wind speed:** 12.5m/s  
**Survival wind speed:** 52m/s  
**Total weight:** 19kg  
**Number of blades:** 3  
**Rotor diameter:** 1.8m  
**Rotor speed (RPM):** 200 – 800

**Generator type:** 3-Phase AC Permanent Magnet  
**Output type:** 24V, 48V 3-Phase AC  
**Turbine mounting:** 50mm tube to accept 48.3mm scaffold pole  
*Guyed tower installation kit available*  
**Noise:** LAeq 35dB @ 5m/s downwind  
 LAeq 54dB @ 7m/s downwind



**AirForce<sup>®</sup> 1 48V indicative power curve**

For more information, contact:  
**FUTUREENERGY** Ltd  
 Ettington Park Business Centre  
 Stratford Upon Avon  
 Warwickshire  
 CV37 8BT  
 info@futureenergy.co.uk  
 +44 (0)1789 450280  
 www.futureenergy.co.uk

